



UNITED STATES CUSTOMER CATALOG

HEAVY DUTY SKID STEER
& TRACTOR LOADER ATTACHMENTS

2021 RETAIL
PRICING

LONG PRAIRIE, MINNESOTA • WWW.JENKINSIRON.COM • 1 855 732-3843



Skeleton Grapple

- » bolt on side plates
- » 3" spacing between teeth
- » fully greasable pivot points
- » hydraulic covers included

48" Single	\$2,000
62" Single	\$2,300
62"	\$2,700
68"	\$2,750
74"	\$2,800
78"	\$2,850
84"	\$2,900



Debris Grapple

- » 1/2" material
- » 1/2" hardened cutting edge
- » 6" spacing between teeth
- » hydraulic covers included

64"	\$2,650
72"	\$2,700
78"	\$2,800
84"	\$2,850



Brush Grapple

- » 3/4" material thickness
- » 2 - 3000lb hydraulic cylinders
- » replaceable pin on digging teeth

66"	\$2,850
76"	\$2,950
86"	\$3,050



Super Duty Split Brush Grapple

- » independent grapple arms
- » 3/4" material thickness
- » 2 - 3000lb hydraulic cylinders
- » replaceable pin on digging teeth

76"	\$3,600
86"	\$3,900



Tine Grapple

- » 2 1/4" round tines
- » 1/2" grapple claw thickness
- » 4" spacing between tines
- » hydraulic covers included

63"	\$2,800
70"	\$2,900
78"	\$3,000
83"	\$3,100
88"	\$3,200



Earth Auger

- » 2" hex drive unit
- » self centering
- » heavy duty commercial frame
- » combo kits available

Hydraulic Drive	\$2,075
4"	\$230
6"	\$242
9"	\$342
12"	\$396
15"	\$515
18"	\$625
20"	\$685
24"	\$750
30"	\$1,000
36"	\$1,245

2' Auger Extension	\$200
3' Auger Extension	\$250
4' Auger Extension	\$275

Drive + 9" & 12"	\$2,650
Drive + 9" & 18"	\$2,850
Drive + 12" & 18"	\$2,900
Drive + 9", 12" & 18"	\$3,150



Snow Bucket

- » 3' tall, 3 1/2' deep for high volume
- » 3/4" reversible bolt on cutting edge

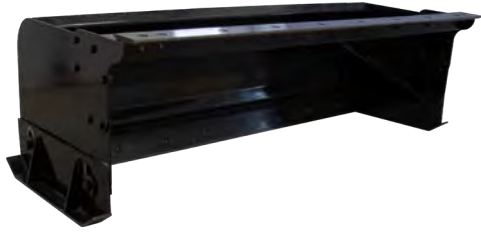
6'	\$1,700
7'	\$1,800
8'	\$1,900
9'	\$2,000
10'	\$2,200
12'	\$2,800



Snow Pushers

- » hardened steel cutting edge
- » free floating skid plates
- » optional back drag (BD)
- » high volume screen (HVS)
- » rubber edge also available (RE)

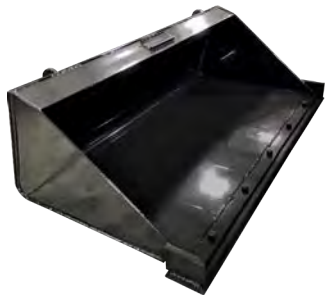
7'	\$2,000
8'	\$2,100
10'	\$2,350
7' BD	\$400
8' BD	\$450
10' BD	\$550
7' HVS	\$400
8' HVS	\$450
10' HVS	\$550



Deluxe Snow Pusher

- » oscillating quick attach plate
- » full trip cutting edge
- » free floating sides
- » Optional high volume screen or back drag

6'	\$2,900
8'	\$3,100
10'	\$3,300
6' BD	\$375
8' BD	\$450
10' BD	\$550
6' HVS	\$375
8' HVS	\$450
10' HVS	\$550



Landscape Bucket

- » 3/4" reversible bolt on cutting edge
- » 3/16" bucket material
- » exact yardage bucket

1/2 yd (58")	\$1,350
1 yd (62")	\$1,550



Rock Bucket

- » 3/8" material
- » 1/2" hardened cutting edge
- » 3" spacing between teeth

62"	\$1,400
68"	\$1,450
74"	\$1,500
78"	\$1,550
84"	\$1,600



Low Profile Dirt Bucket

- » heavy duty 3/4" cutting edge
- » 3/16" bucket material

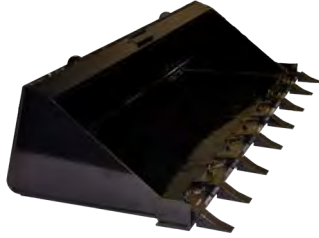
62"	\$1,200
68"	\$1,250
74"	\$1,300
78"	\$1,350
84"	\$1,400



HD Low Profile Dirt Bucket

- » heavy duty 3/4" cutting edge
- » 1/4" bucket material

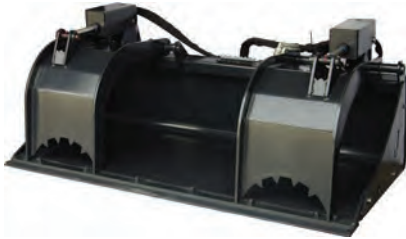
62" HD	\$1,350
68" HD	\$1,400
74" HD	\$1,450
78" HD	\$1,500
84" HD	\$1,550
96" HD	\$1,700



HD Low Profile Dirt Bucket with Teeth

- » heavy duty 3/4" cutting edge
- » 1/4" bucket material
- » pin on replaceable teeth

62" HD	\$1,500
68" HD	\$1,600
74" HD	\$1,700
78" HD	\$1,800
84" HD	\$1,900
96" HD	\$2,000



HD Low Profile Grapple Bucket

- » 3/16" bucket material
- » 3/4" reversible bolt on cutting edge
- » removable bolt on side plates
- » hydraulic covers included

62"	\$2,400
68"	\$2,500
74"	\$2,600
78"	\$2,700
84"	\$2,800



Hi Capacity Grapple

- » 3/16" bucket material with 5/16" end plates
- » extremely high volume
- » 80" opening

6'	\$3,200
7'	\$3,300
8'	\$3,400



4 in 1 Bucket

- » used for dozing, land leveling, grapping, dumping etc
- » 3 reversible, 3/4" replaceable cutting edges
- » can be fitted with replaceable tip excavator teeth

72"	\$3,500
78"	\$3,750
82"	\$3,950



4 in 1 Bucket w/ Teeth

- » used for dozing, land leveling, grapping, dumping etc
- » 3 reversible, 3/4" replaceable cutting edges
- » pin on replaceable teeth

72"	\$3,650
78"	\$3,900
82"	\$4,150



High Dump Bucket

- » 51" increased dump height
- » 3/4" reversible bolt on cutting edge
- » screening in back for visibility

62"	\$3,100
68"	\$3,200
74"	\$3,300
78"	\$3,400
84"	\$3,500



Pallet Forks

- » walk through style for easy access to loader
- » adjustable forks rated at 5500 lbs
- » manually adjustable

Carriage	Forks	
4'	4'	\$1,000
4'	5'	\$1,100
4'	6'	\$1,200
5'	4'	\$1,100
5'	5'	\$1,200
5'	6'	\$1,300
6'	4'	\$1,200
6'	5'	\$1,300
6'	6'	\$1,400



Hydraulic Sliding Pallet Forks

- » forks rated at 5500 lbs
- » hydraulic powered adjusting forks
- » walk through style for easy access to loader

Carriage	Forks	
4'	4'	\$2,000
4'	5'	\$2,100
4'	6'	\$2,200
5'	4'	\$2,100
5'	5'	\$2,200
5'	6'	\$2,300
6'	4'	\$2,200
6'	5'	\$2,300
6'	6'	\$2,400



Bale Spear

- » 49" or 39" German spears
- » heavy duty square box frame
- » modified to fit a variety of tractor loader models

2 Prong 49" Spears	\$1,000
3 Prong Sgl. Round 49" Spears	\$900
4 Prong Dbl. Round 49" Spears	\$1,400
4 Prong Sq. Bales 39" Spears	\$1,150

39" Spear	\$120
49" Spear	\$150



Backhoe

- » 6.5' or 8.5' dig depth
- » 12" or 18" wide HD bucket
- » replaceable pin on teeth
- » optional mechanical thumb for gripping debris

6.5' w/ 9"	\$2,100
6.5' w/ 12"	\$2,200
6.5' w/ 18"	\$2,300
6.5' w/ 24"	\$2,400
8.5' w/ 9"	\$2,250
8.5' w/ 12"	\$2,300
8.5' w/ 18"	\$2,425
8.5' w/ 24"	\$2,550
9" Bucket	\$300
12" Bucket	\$350
18" Bucket	\$450
24" Bucket	\$550
Thumb	\$300



Trencher

- » double standard ABF - tooth in every available position
- » welded teeth w/ cemented carbide edges
- » 1/2 rock & frost - half teeth are conical carbide
- » rock and frost chain - (R&F)
- » standard chain - (SC)

24" x 6" SC	\$4,250
24" x 8" SC	\$4,486
24" x 10" SC	\$4,570
24" x 12" SC	\$4,611
36" x 6" SC	\$4,481
36" x 8" SC	\$4,721
36" x 10" SC	\$4,834
36" x 12" SC	\$4,840
42" x 6" SC	\$4,668
42" x 8" SC	\$4,898
48" x 6" SC	\$4,805
48" x 8" SC	\$5,043
60" x 6" SC	\$5,263

24" x 6" R&F	\$4,633
24" x 8" R&F	\$5,784
36" x 6" R&F	\$5,094
36" x 8" R&F	\$5,249
42" x 6" R&F	\$5,331
42" x 8" R&F	\$5,493
48" x 6" R&F	\$5,521
48" x 8" R&F	\$5,683
60" x 6" R&F	\$7,000
Opt. Cleaner Tool	\$300



Hydraulic Angle Sweeper

- » hydraulic angle
- » poly and stainless steel bristles
- » Eaton Char-Lynn motors

4'	\$4,500
5'	\$4,600
6'	\$4,700
7'	\$4,800
8'	\$4,900



Pickup Bucket Sweeper Broom

- » Eaton Char-Lynn motor
- » steel and poly combo bristles
- » commercial bucket w/ 3/4" reversible bolt on cutting edge

74"	\$4,300
84"	\$4,500



Land Leveler

- » replaceable 1/2" cutting edges
- » removable, replaceable screening for sifting, scooping material and rock
- » durable tube frame
- » optional scarifying teeth
- » top mounted bucket hooks

68"	\$1,700
74"	\$1,800
78"	\$1,900
84"	\$2,000
68" w/ teeth	\$2,150
74" w/ teeth	\$2,250
78" w/ teeth	\$2,350
84" w/ teeth	\$2,450



Soil Conditioner

- » Eaton Char-Lynn hydraulic motor that is both standard & high flow ready
- » 10" drum spinner
- » 4"x8" heavy walled rectangular backbone

6'	\$7,000
7'	\$7,200



Tiller

- » dual Eaton Char-Lynn motors
- » 4 swing away blades per spindle
- » bi-directional tilling
- » zero maintenance direct drive

5'	\$3,600
6'	\$3,900
7'	\$4,200



Dozer Blade

- » full hydraulic tilt
- » 5/16" face plate gusseted throughout
- » reversible & replaceable bolt on cutting edge
- » commercial grade

6'	\$4,550
7'	\$4,750
8'	\$4,950



Hydraulic Angle Snow Blade

- » full trip blade with dual cylinder hydraulic angle
- » adjustable blade height
- » bolt on replaceable cutting edge

6'	\$2,700
7'	\$2,800
8'	\$2,900
9'	\$3,000
10'	\$3,100



Super Winged Hydraulic Angle Snow Blade

- » 2' hydraulic wings
- » oscillating quick attach plate
- » full trip edge
- » full trip wing edges

6' + 4'	\$6,300
7' + 4'	\$6,400
8' + 4'	\$6,500



Brush Mower

- » 1/4" HD free floating deck
- » Eaton Char-Lynn motor
- » easy to replace blades
- » wheel kit available
- » standard flow rate 14-25 gpm

5'	\$4,900
6'	\$5,150
7'	\$5,600
Wheel Kit	\$400
Push Bar	\$250



Direct Drive Brush Mower

- » 1/4" HD free floating deck
- » Eaton Char-Lynn motor
- » 4 easy to replace blades
- » wheel kit available
- » standard flow rate 14-25 gpm
- » no gear box
- » 500 lbs flywheel for maximum brush clearing capability

6'	\$5,900
7'	\$6,300
Wheel Kit	\$500
Push Bar	\$300



Tree Shear

- » 90° rotating head
- » AR 400 hardened cutting blade
- » 6" 42 ton cylinder

Manual Rotate	\$4,100
Hydraulic Rotate	\$4,900



Post & Tree Puller

- » brush guard available
- » 3" x 3" tube frame
- » 1/2" steel teeth
- » 3000lb hydraulic cylinder
- » 17" opening

Puller	\$1,500
Puller + Guard	\$1,750



Stump Bucket

- » 1/2" steel bucket
- » 12" wide bucket
- » replaceable pin on teeth
- » overall length 64"

64" L	\$1,250
-------	----------------



Stump Bucket Grapple

- » 1/2" steel bucket
- » overall length 64"
- » replaceable pin on teeth
- » serrated top edge

64" L	\$1,750
-------	----------------



Wood Splitter

- » inverted style 36" bite monster
- » 5" 30 ton cylinder and I-beam construction
- » single split AR-400 abrasion resistant blade

One Size	\$2,900
4 Way Blade	\$3,000



Concrete Hopper

One Size	\$1,800
----------	----------------

- » commercial grade 3/4 yard
- » gusseting on all wear points
- » center mounted hydraulic controlled shoot
- » removable chute extension



Stump Grinder

One Size	\$5,500
----------	----------------

- » Eaton Char-Lynn motor
- » hydraulic swing & depth control
- » 25" diameter cutting wheel
- » carbide Greenteeth (rotate 3 times before replacing)
- » commercial 3/4" HD disc
- » case drain required



Electromagnet

7,700 lb	\$13,000
----------	-----------------

- » 7,700 lbs capacity
- » hydraulic generator electro magnet
- » case drain required



Extendable Boom

One Size	\$2,700
----------	----------------

- » 10' retracted length
- » 6' hydraulically operated second section and a 4' manually third section for a total of 20'
- » replaceable wear pads



Ice Scraper

One Size	\$1,000
----------	----------------

- » quickly removes frozen or hardened build up from solid surfaces
- » replaceable self sharpening disc
- » commercial grade frame



Receiver Hitch

45" L	\$350
-------	--------------

- » makes moving trailers, implements and goose necks easier
- » long snout enables easy visibility
- » top gussets strengthen hitch



Quick Attach Plates

Partial	\$125
Solid	\$150

- » 5/16" thick plate
- » full and partial backer plates available